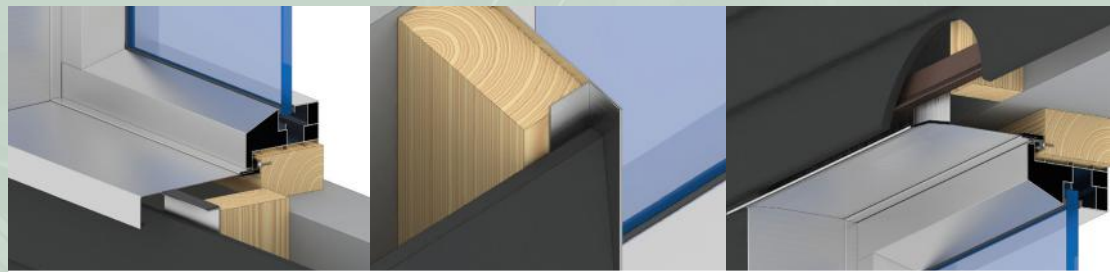


# Window profiles

Explore our high-quality window profiles, including the ventilation profile, horizontal window profile, and connection profile. Each profile is meticulously crafted to not only meet the highest standards in functionality but also contemporary aesthetic demands. Whether it's optimal air circulation, a sleek finish, or seamless integration, our window profiles elevate your project to a new level of durability and style.



**IPEX**

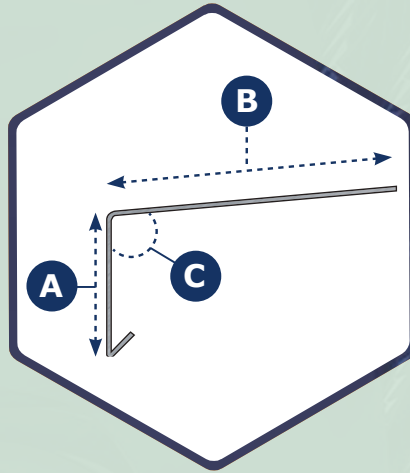
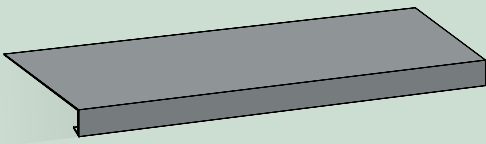
# Ipex Profiles

Designed for optimal water drainage and moisture protection, our drip profile provides the ideal solution for facade construction. The horizontally placed, sloping design ensures effective runoff of rainwater, keeping your facade durable and stylish.

## Drip profile

Aluminium

# 0697



### Material:

- Aluminium

### Surface finish:

- Clear  
- Powdercoat

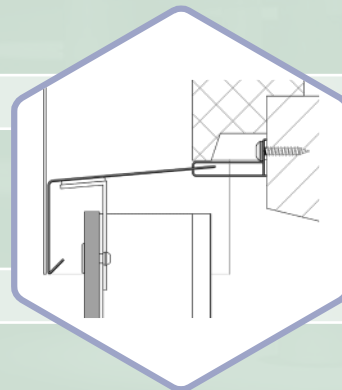


| Powdercoating for this profile is possible in all colours. |

A (MM)	B (MM)	C (MM)	LENGTH (MM)
30	70	110°	3000
30	100	110°	3000
30	130	110°	3000
30	160	110°	3000
30	190	110°	3000
30	220	110°	3000



| APPLICATION |



| APPLICATION |



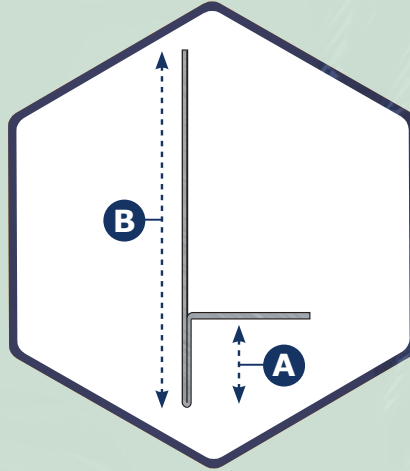
# Ipex Profiles

Crafted for window and door openings, our window reveal profile not only delivers a sleek finish but also shields effectively against moisture infiltration. This essential addition enhances the durability of your construction project, providing a stylish and functional solution.

## Connector profile

Aluminium

# 0696



**Material:**

- Aluminium

**Surface finish:**

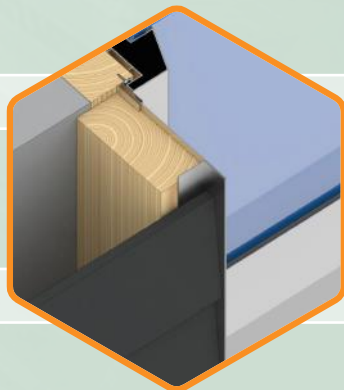
- Clear  
- Powdercoat



| Powdercoating for this profile is possible in all colours. |

A (MM)	B (MM)	LENGTH (MM)
21	70	3000
21	100	3000
21	130	3000
21	160	3000
21	190	3000
21	220	3000

Other sizes on request.



| APPLICATION |



| APPLICATION |



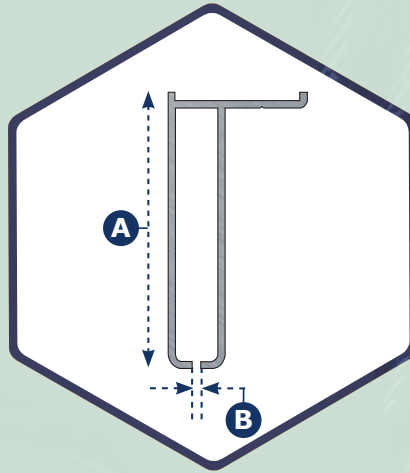
# Ipex Profiles

Crafted for seamless integration, our connection profile not only provides a flawless finish but also ensures optimal connections. This versatile profile not only enhances the aesthetics of your project but also contributes to durability and functionality. To be used with o696 or o223, among others.

## Connector profile

Aluminium

# 0187



**Material:**

- Aluminium

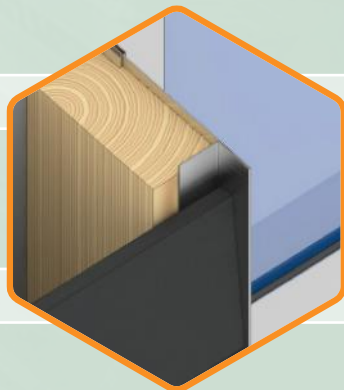
**Surface finish:**

- Clear  
- Powdercoat

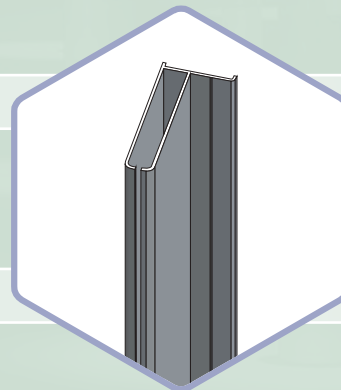


| Powdercoating for this profile is possible in all colours. |

A (MM)	B (MM)	LENGTH (MM)
40	2	3000



| APPLICATION |



| APPLICATION |





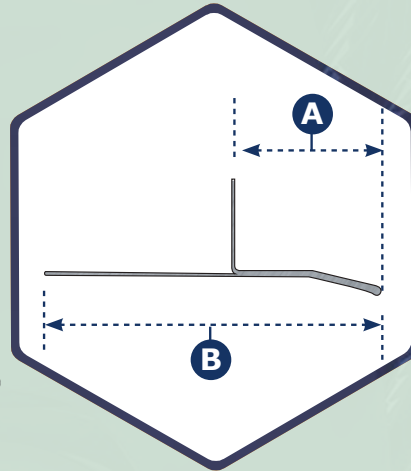
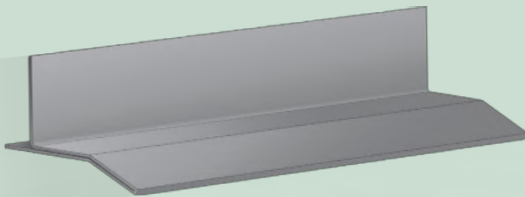
# Ipex Profiles

Designed with precision for a sleek look, our horizontal window profile seamlessly blends functionality with modern aesthetics. This profile not only provides stability but elevates the visual appeal of your window opening to a new level.

## Horizontal windowprofile

Aluminium

# 0713



**Material:**

- Aluminium

**Surface finish:**

- Clear  
- Powdercoat



| Powdercoating for this profile is possible in all colours. |

A (MM)	B (MM)	LENGTH (MM)
55	70	3000
55	100	3000
55	130	3000
55	160	3000
55	190	3000
55	210	3000



| APPLICATION |



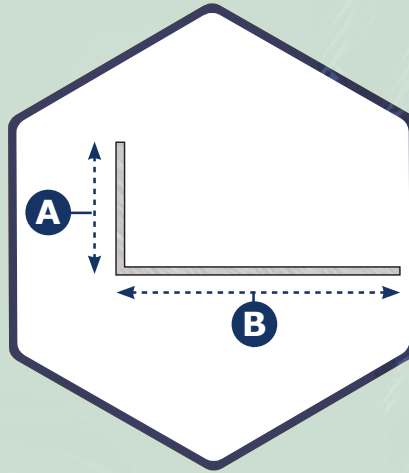
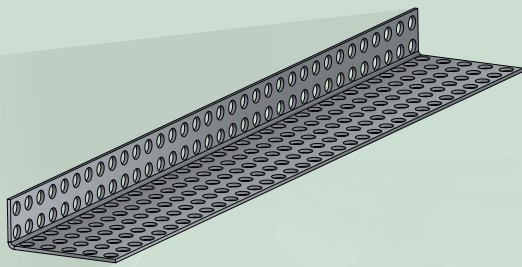
# Ipex Profiles

Crafted for optimal air circulation in facade cladding, our ventilation profile ensures efficient ventilation while providing a sleek finish.

## Ventilation profile

Aluminium

# 0223



**Material:**

- Aluminium

**Finish:**

- Fully perforated

**Surface finish:**

- Blank  
- Poedercoat



| Powdercoating for this profile is possible in all colours. |

A (MM)	B (MM)	LENGTH (MM)
30	20	3000
30	30	3000
30	40	3000
30	50	3000
30	70	3000
30	100	3000

Other sizes on request.



| APPLICATION |

