

CONSTRUCTION PRINCIPLE

C 033

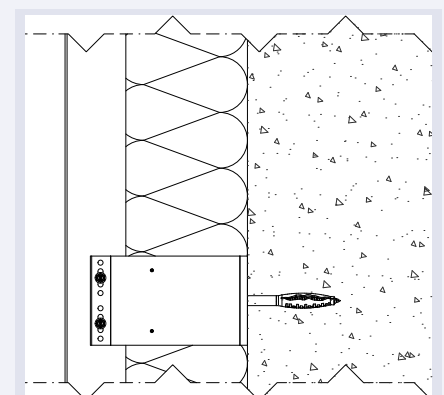
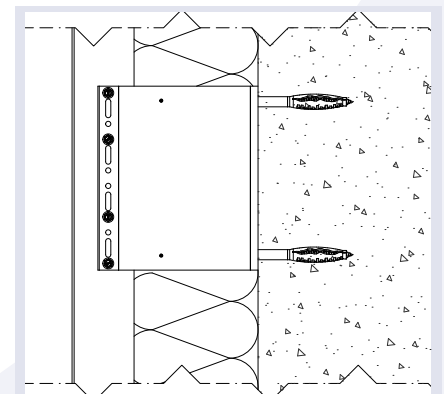
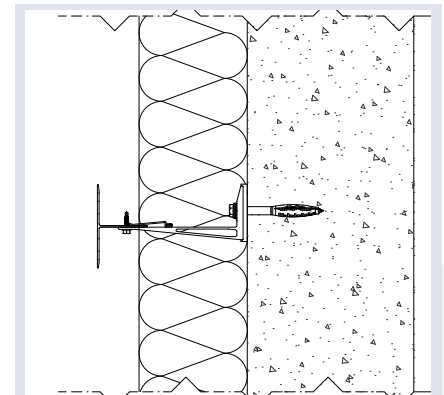
Construction principle with double-walled wall supports ensure very high rigidity.

Features:

- Force transfer is a-centric and ideally suited for heavy façade structures on a solid main load-bearing structure with sufficient load-bearing capacity.
- In combination with 0227 / 0251 profiles.



APPLICATION



0234

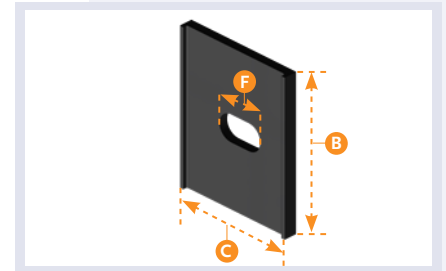


INSULATOR

Insulator for the fix brackets; thermal value 0.087 W/mK.

B (MM)	C (MM)	F (MM)
50	60	15 x 22
60	60	15 x 22
90	60	15 x 22
180	60	15 x 22

Material: Polymer foam plastic vinyl chloride.



0238-180

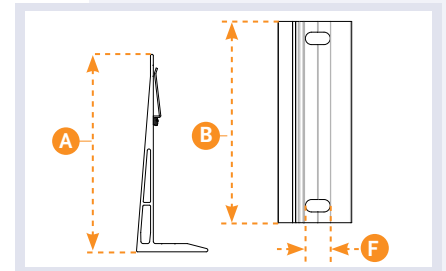


BRACKET FIX

Bracket, double-walled, fix.

A (MM)	B (MM)	F (MM)
60	180	7 x 22
90	180	11 x 22
120	180	15 x 22
150	180	
180	180	
210	180	
240	180	

Material: Aluminium EN AW 6063 T66.
Surface: Plain



0238-88

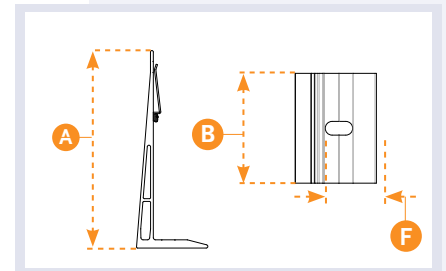


BRACKET SLIDE

Bracket, double-walled, slide.

A (MM)	B (MM)	F (MM)
60	88	7 x 22
90	88	11 x 22
120	88	15 x 22
150	88	
180	88	
210	88	
240	88	

Material: Aluminium EN AW 6063 T66.
Surface: Plain



0482



UNIVERSAL CONSTRUCTION PLUG

Nylon construction plug, with ETA approval.
Size: M10 x 80

Material: Stainless steel A4 / 316
Steel zinc-plated