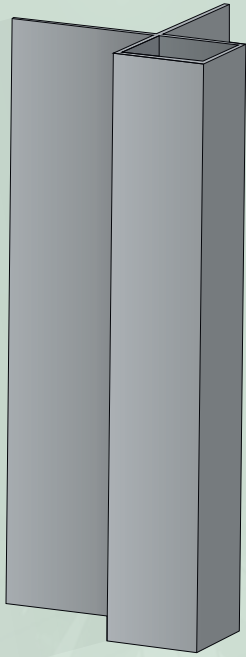


Ipex profiles

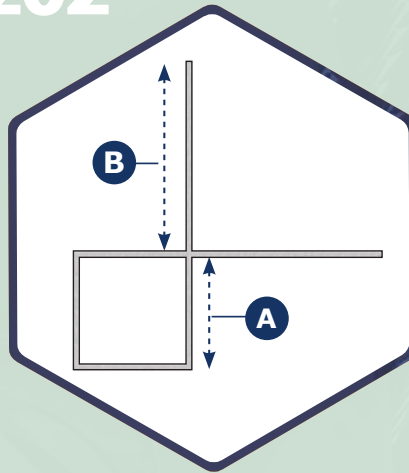
Aluminium exterior corner profiles are durable and versatile construction components. These profiles provide protection and a sleek finish to exterior corners of buildings, making them resistant to weathering while maintaining an aesthetically pleasing appearance.



External corner profile

Aluminium

0202



Material:

- Aluminium

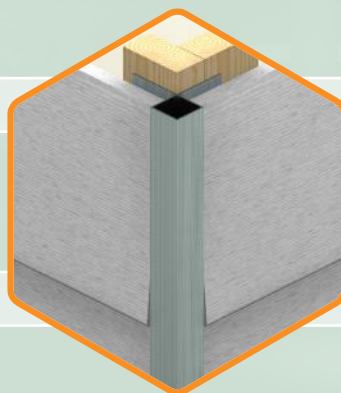
Surface finish:

- Anodised
- Powdercoat



| Powder coating of this profile is possible in all colours. |

A (MM)	B (MM)	DIKTE (MM)	LENGTH (MM)
12	40	1,3	3055
25	40	1,3	3055



| APPLICATION |

