

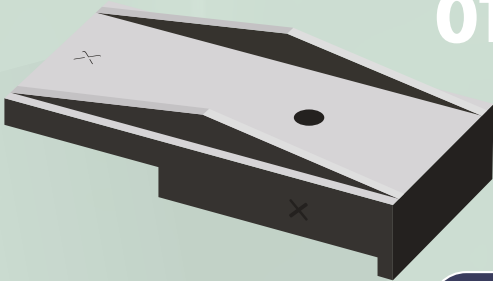
Melt anchor

Melt anchor

(PA) for fire walls

0133

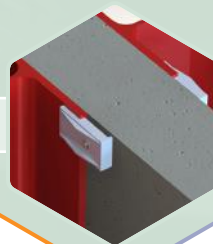
- Special for fire walls, with steel studs.
- In case of fire the anchors melts.



LENGTH	WIDTH	HOLE Ø
100 mm	50 mm	7,5 mm

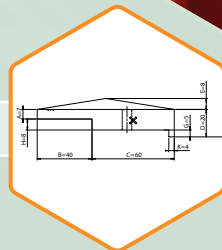
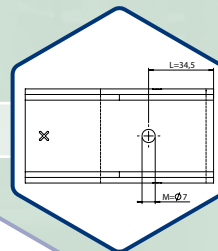
SPECIFICATION	VALUE	UNIT
Material	PA66 GF30	
Standard	ISO	
Density	1.36	g/cm ³
Tensile strength	175	MPa
Elongation	2	%
Bending strength	240	Mpa
Hardness	120	R Scale
Impact strength	13	KJ/m ²
Deflection temperature (Load <0,45 MPa)	235	°C
Maximum short-term working temperature	149	°C
Maximum long-term working temperature	99	°C
Mold shrink	0,2 - 0,6	%
Moisture absorption	6	%
Surface resistance	10 ¹⁴	Ω
Point of fusion	255	°C
Reinforced glass	35	%

| APPLICATION |



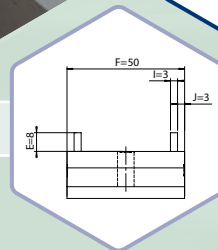
| VIEWS |

Top view



| VIEWS |

Side view



| VIEWS |

Front view

