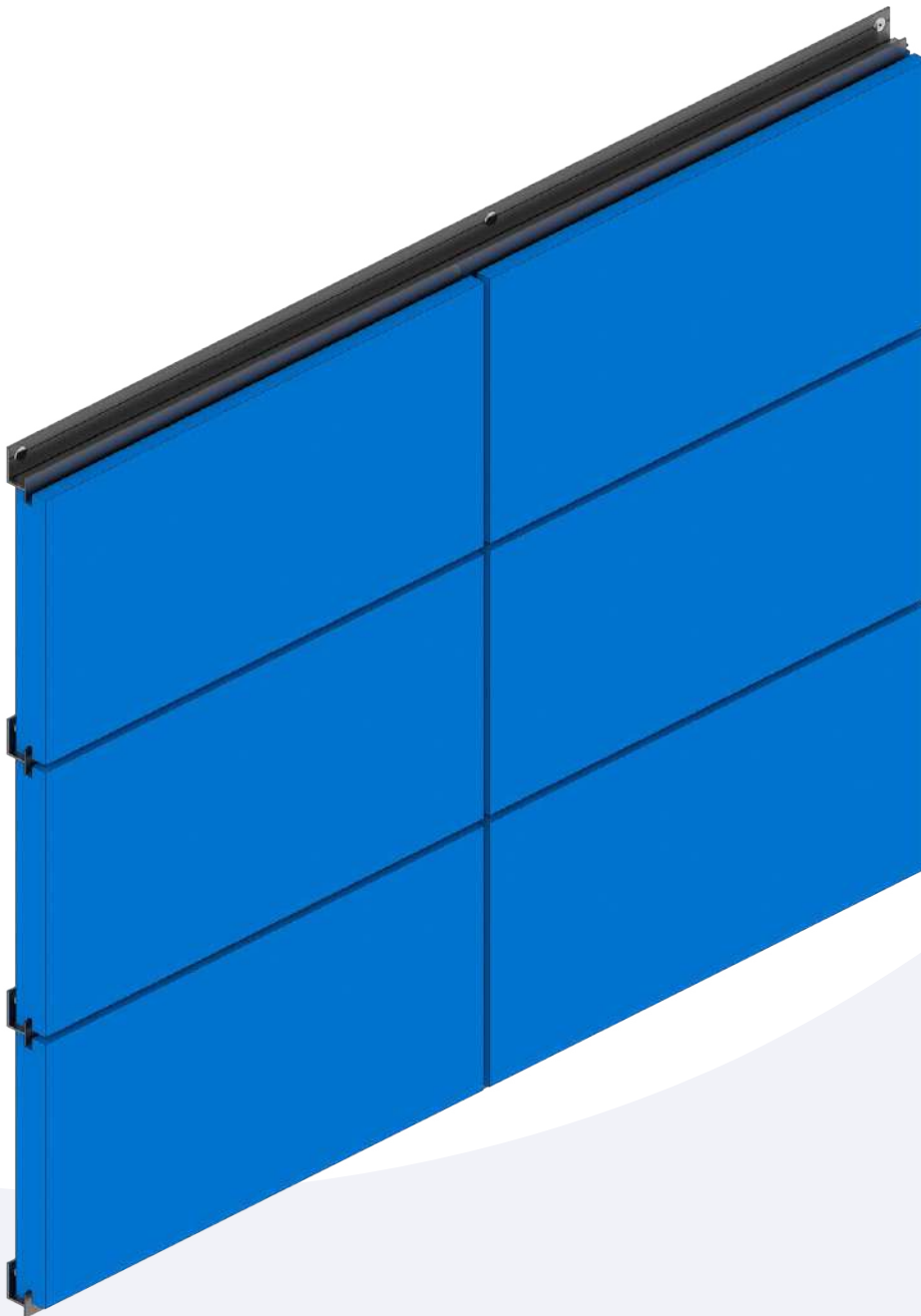


# FASTENING METHOD

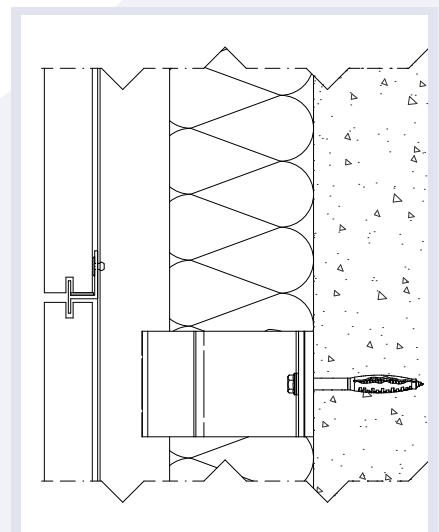
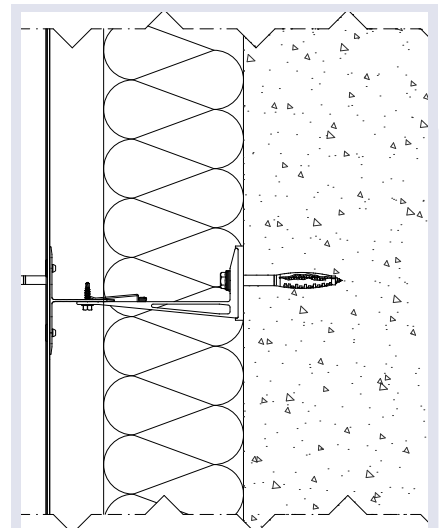
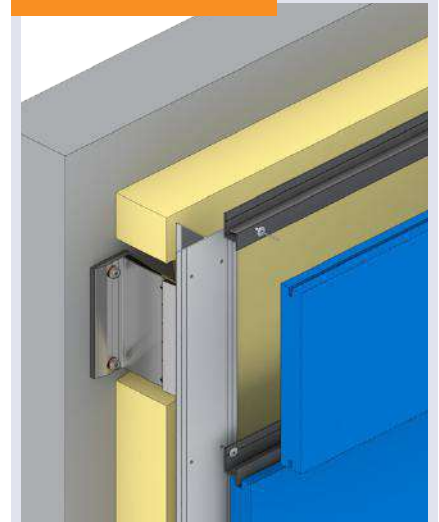
## B 017

Invisible fastening method in which a continuous slot is milled into the cladding. This hangs the facade panel over a horizontal aluminium support profile. This support profile can be mounted on various pre-punched alignment profiles. Suitable for material thicknesses up to 30 mm.

Application: e.g. on stone, ceramics, solid surface, HPL.



### APPLICATION



## 0609

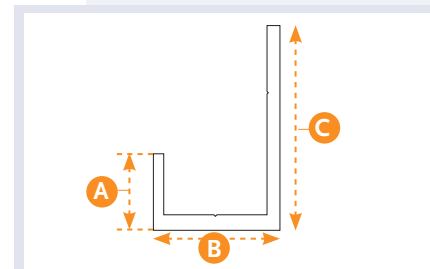


### START PROFILE

Start profile for attaching slot. Tile Thickness 20 – 40 mm.  
Slotted holes Optional

A (MM)	B (MM)	C (MM)	L (MM)
14.8	24.5	39.6	6,000

Material:: EN AW 6060 T66  
Surface: Black anodised



## 0606

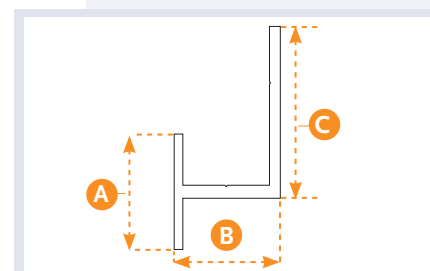


### JOINT / END PROFILE

Slot attachment, joint / end profile. Tile Thickness 20 – 40 mm.  
Slotted holes Optional

A (MM)	B (MM)	C (MM)	L (MM)
27	24.5	40	6,000

Material:: EN AW 6060 T66  
Surface: Black anodised



## 0648



### EPDM INSULATOR

Insulator for I-Slot.

ID (MM)	OD (MM)	L (MM)
2.0	4.0	50
2.0	5.0	50

Material: EPDM  
Surface: Smooth

## 0106



### COLOUR-RIVET ®

Blind rivet for profile 0606 -0609  
Size: 5.0 x 12 H14

Material:: Aluminium Stainles  
Surface: Plain

## 0750



### I-BOND

Various glue types, depending on facade panel type, weight and size.

Content: 600 ml