

FASTENING METHOD

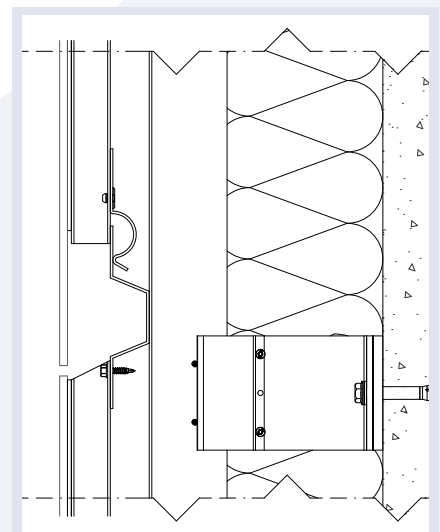
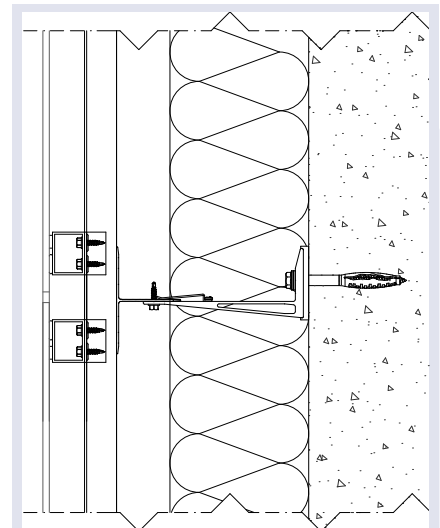
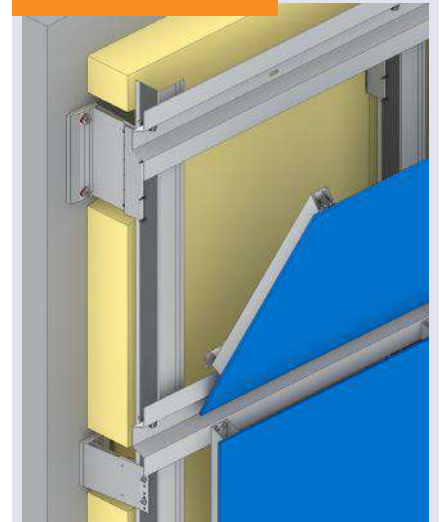
B 014

Invisible fastening method, where cassettes are glued to the back of the cladding by means of a profile system. The resulting prefabricated element can then be mounted on a horizontal battens. The panel can still be corrected in height. This method is characterised by minimal on-site handling and the elements can be dismantled individually.

Application: e.g. on HPL, ACP, wood, steel, glass, ceramics, fibre cement.



APPLICATION



www.ipex-group.com/B014

0567

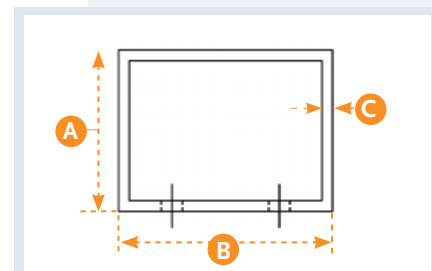


BOX PROFILE

Aluminium box profile.

A (MM)	B (MM)	C (MM)
30	40	2
40	40	2
80	40	2,5

Material: EN AW 6063 T6
Surface: Plain anodised



0564



CLAMPING BRACKET

Aluminium clamp

Material: EN AW Aluminium 5754 H22
Surface: Plain

0105



COLOUR-RIVET ®

Blind rivet for attaching 0564 to 0567.
Size: 5.0 x 10

Material: Aluminium / Stainless
Surface: Plain

0390



TRUSSHEAD

Self-drilling screw, for attaching 0567.
Size: 4.2 x 32, Torx drive.

Material: Stainless A2 (304)
Surface: Zinc-plated

I-Bond



GLUE CARTRIDGES

Different adhesive types, the choice for which type is suitable depends on cladding panel type, weight and size.

Content: 600 ml

I-Bond



CLEANING

Cleaning materials among others for pre-treating various facade panels.

I-Bond



PRIMER

Primers for pre-treatment of substructure and facade plate.

Contents: 1 L or 5 L

I-Bond



TAPE

Foam tape for initial adhesion and spacer of facade plate.

Tape 12 mm x 3 mm x 25 M
Tape 19 mm x 3 mm x 25 M