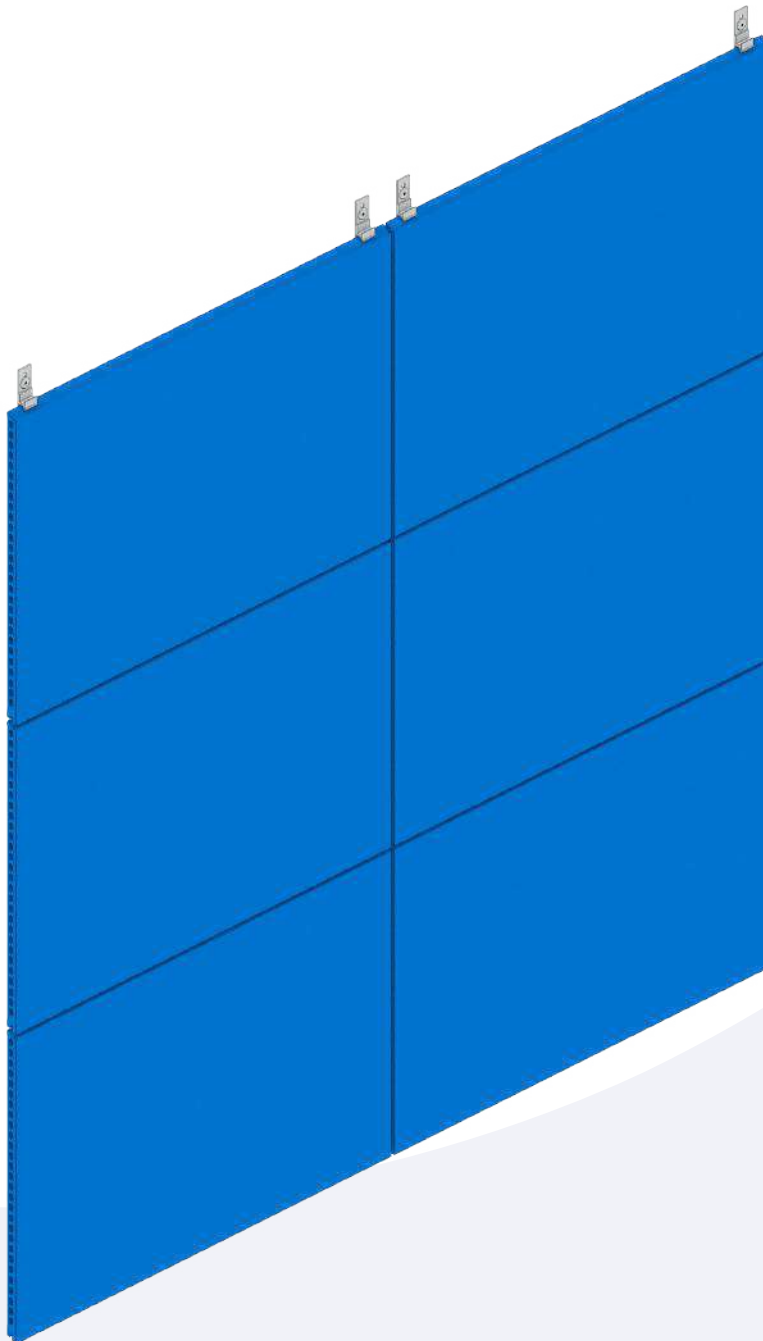


# FASTENING METHOD

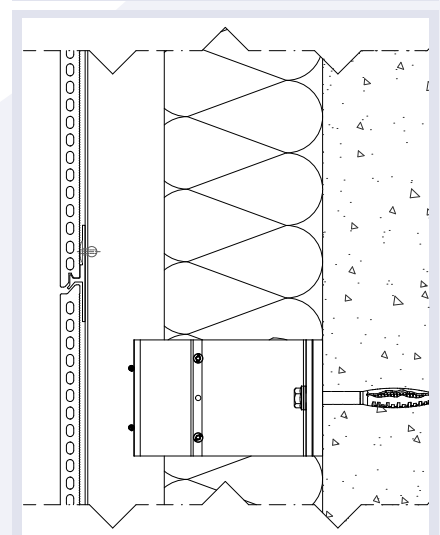
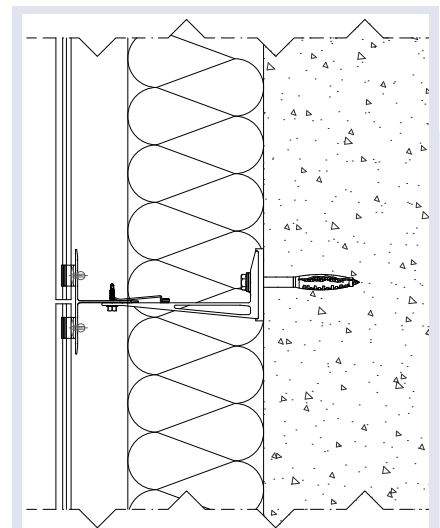
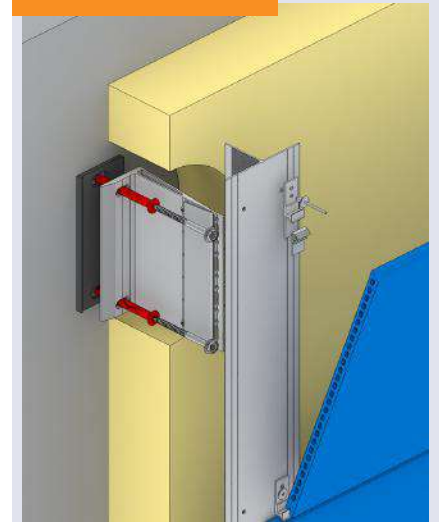
## B 011

Invisible fastening method for extruded ceramic façade tiles.  
The tile is mounted with clamps on a vertical profile system. This system features a hole pattern parallel to the design grid of the facade. A joint profile can be mounted in the vertical joint.

Application: tile type Favemanc XB



### APPLICATION



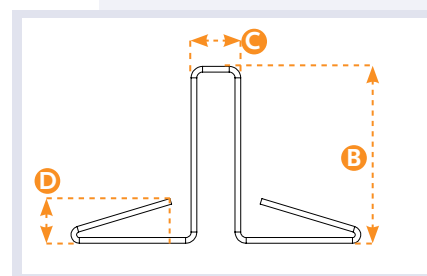
## 0633



### JOINT PROFILE

B (MM)	C (MM)	D (MM)	L (MM)
15	7	8	3000
15	7	10	3000
15	7	12	3000
23	7	8	3000
23	7	10	3000
23	7	12	3000

Material: Aluminium 5005  
Surface: Plain or powder-coated



## 0614



### START TILE CLAMP

Material: EN AW 6060 T66  
Surface: Black anodised

## 0523



### JOINT / END CLAMP

Material: EN AW 6060 T66  
Surface: Black anodised

## 0566



### EPDM RUBBER

EPDM profile for the 0523 clamp.

Material: EPDM  
Surface: Smooth

## 0105



### COLOUR-RIVET ®

Blind rivet, for attaching the 0614 and 0523.  
Size: 5.0 x 10

Material: Aluminium / Stainless  
Surface: Plain

### B 011 - ADVICE



Use pre-punched profiles.