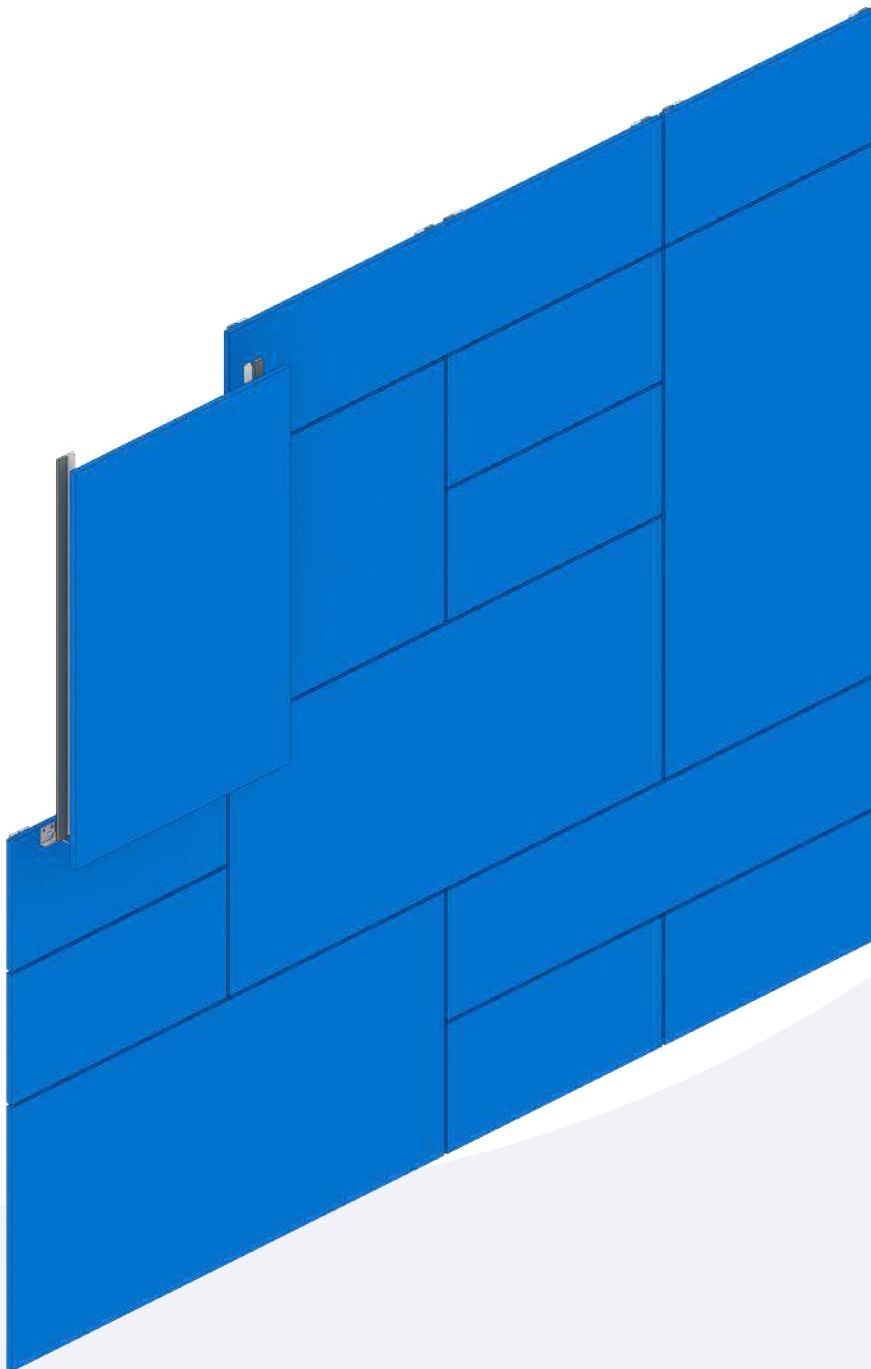


FASTENING METHOD

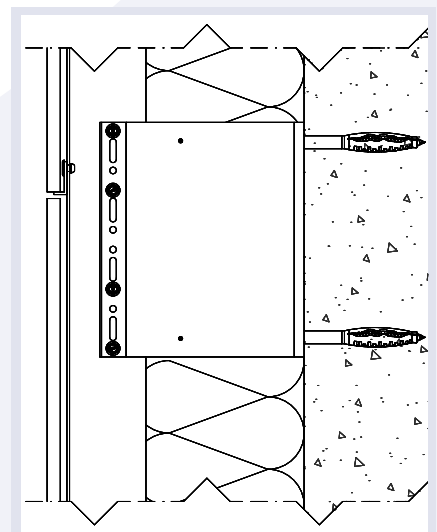
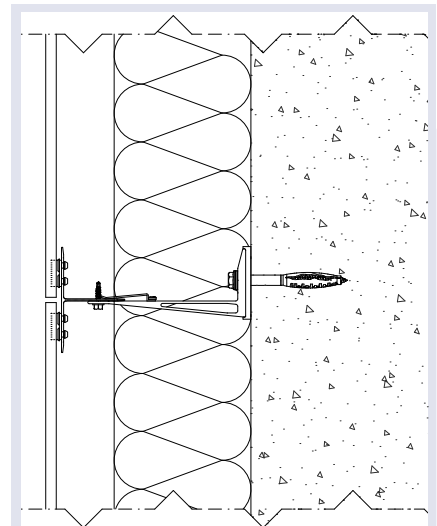
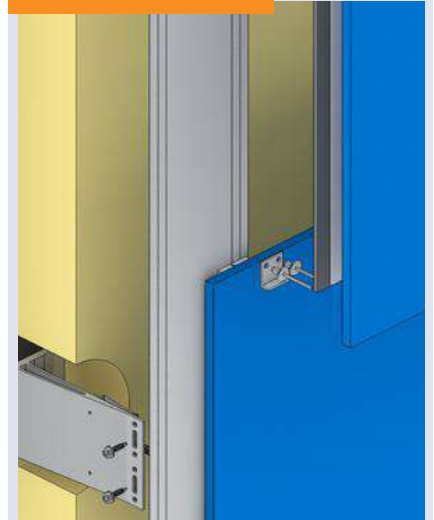
B 009

Invisible fastening method, where the facade plate is mounted with plate supports and bonding. Very suitable for bonding facade cladding panels with a high deadweight, such as ceramic tiles. Thanks to this support, exact fitting of a heavy facade plate is much easier.

Suitable for: e.g. stone, fibre cement, ceramics.



APPLICATION



0552

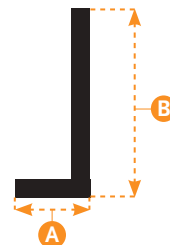


PLATE SUPPORT

Plate support, with 5.1 mm holes.

A (MM)	B (MM)	LENGTE (MM)
10	25	25

Material: EN AW 6063 T66.
Surface: Black powder-coated.



0105



COLOUR-RIVET ®

Blind rivet for attaching 0552
Size: 5.1 x 10

Material: Stainless A2 (0304)
Surface: Plain

I-Bond



GLUE CARTRIDGES

Different adhesive types, the choice for which type is suitable depends on cladding panel type, weight and size.

Content: 600 ml

I-Bond



TAPE

Foam tape for initial adhesion and spacer of facade plate.

Tape 12 mm x 3 mm x 25 M
Tape 19 mm x 3 mm x 25 M

I-Bond



PRIMER

Primers for pre-treatment of substructure and facade plate.

Contents: 1 L or 5 L

I-Bond



CLEANING

Cleaning materials among others for pre-treating various facade panels.

B 009 - ADVICE



Use pre-punched profiles.