

FASTENING METHOD

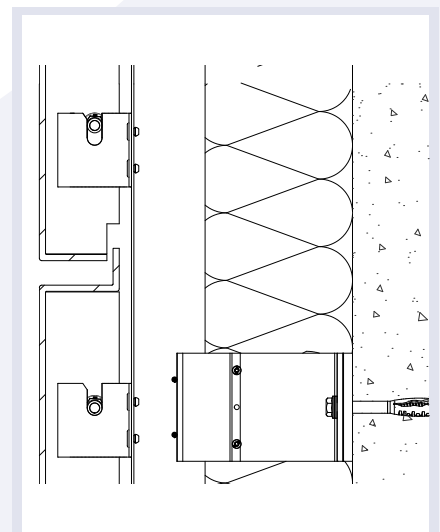
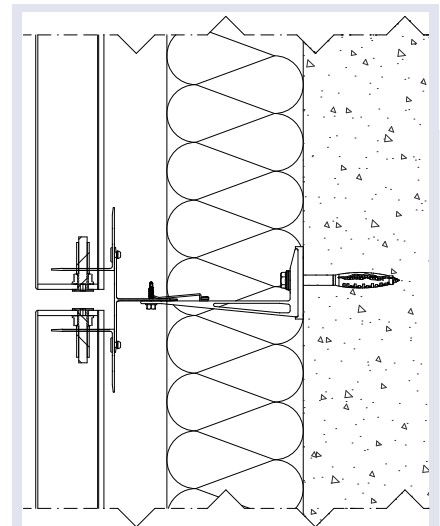
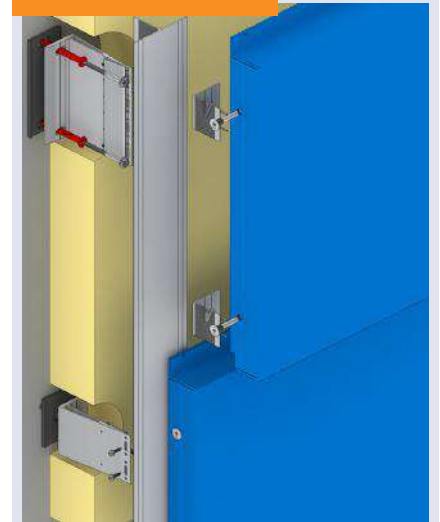
B 007

Invisible cassette fastening method, in which special bolts are fixed in the cassette. This allows the cassette to rest on hooks mounted on pre-punched alignment profiles. This keeps the specific vertical joints associated with these cassettes free of (image-defining) obstacles. The distinctive advantage of this system is its quick and easy processing on site.

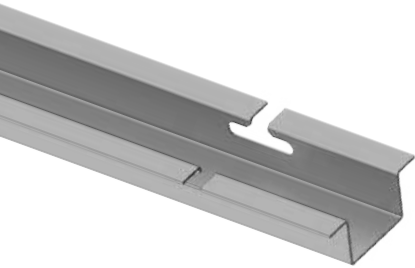
Suitable for: including aluminium and ACP



APPLICATION



0836



OMEGA PROFILE

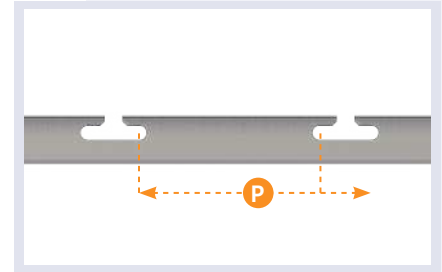
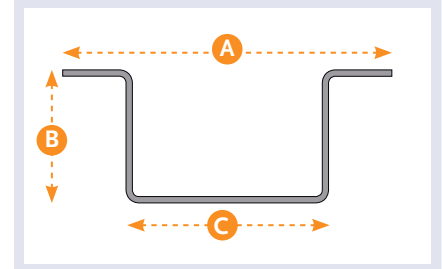
Aluminium omega profiles.

A (MM)	B (MM)	C (MM)	P (MM)	L (MM)
100	45	60	200	3,000
100	65	60	200	3,000

Material: EN AW 6060 T66
 Surface: Plain
 anodized grey/black
 powder-coated

Machining:
 - Cutting to size.

*P = Pitch



0513

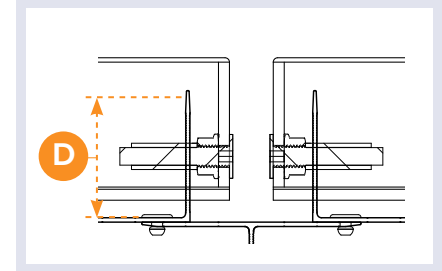


CASSETTE BRACKET

Cassete bracket, left-sided version.
 D = 60, 40, 30 mm.

Cassete bracket, right-sided version.
 D = 60, 40, 30 mm.

Material: EN AW 6063 T6.
 Surface: Plain



0511



CASSETTE SOCKET BOLT

Cassete bolt M8, with Allen drive.

Material: Stainless A4 (316)
 Surface: Plain

0105



COLOUR-RIVET ®

Blindklinknagel, voor de montage van 0513.
 Maat: 5,0 x 10

Materiaal: Aluminium / roestvaststaal
 Oppervlakte: Blank

0520



FRICTIONCAP

Rubber sleeve, for the 0511 bolt.

Material: EPDM
 Surface: Plain

0515



NUT

Nut M8, for the 0511 cassette bolt, with serrations.

Material: Stainless A4 (316)
 Surface: Plain

B 007 - ADVICE



Use pre-punched profiles.