

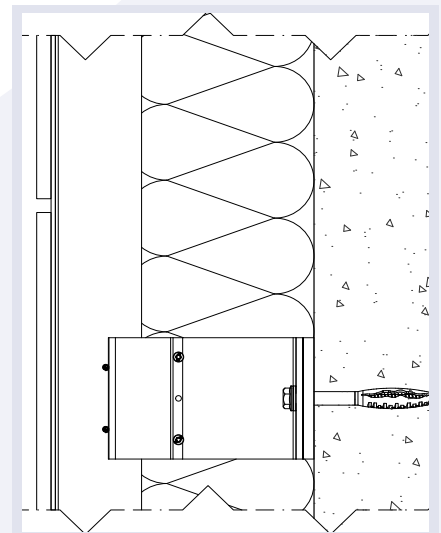
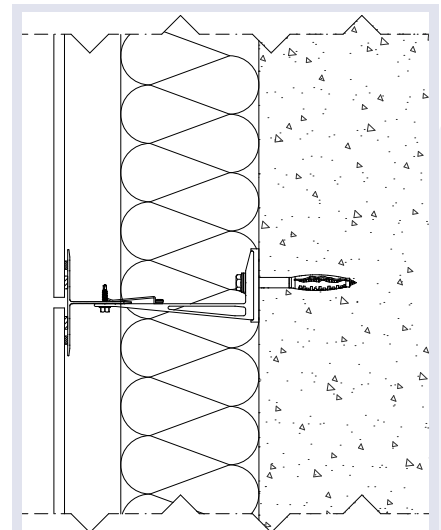
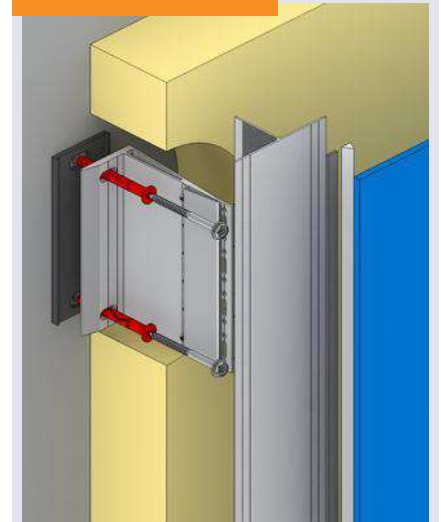
# FASTENING METHOD

## B 003

Invisible fastening method in which the facade plate is fixed on site with a specially developed adhesive system for facade plates. facade plate adhesive system. This method was developed in consultation with various adhesive suppliers.

Suitable for: e.g. HPL, ACP, wood, steel, glass, fibre cement, ceramics.

### APPLICATION



[www.ipex-group.com/B003](http://www.ipex-group.com/B003)

## I-Bond



### GLUE CARTRIDGES

Different adhesive types, the choice for which type is suitable depends on cladding panel type, weight and size.

Content: 600 ml

## I-Bond



### TAPE

Foam tape for initial adhesion and spacer of facade plate.

Tape 12 mm x 3 mm x 25 M

Tape 19 mm x 3 mm x 25 M

## I-Bond



### PRIMER

Primers for pre-treatment of substructure and facade plate.

Contents: 1 L or 5 L

## I-Bond



### CLEANING

Cleaning materials among others for pre-treating various facade panels.