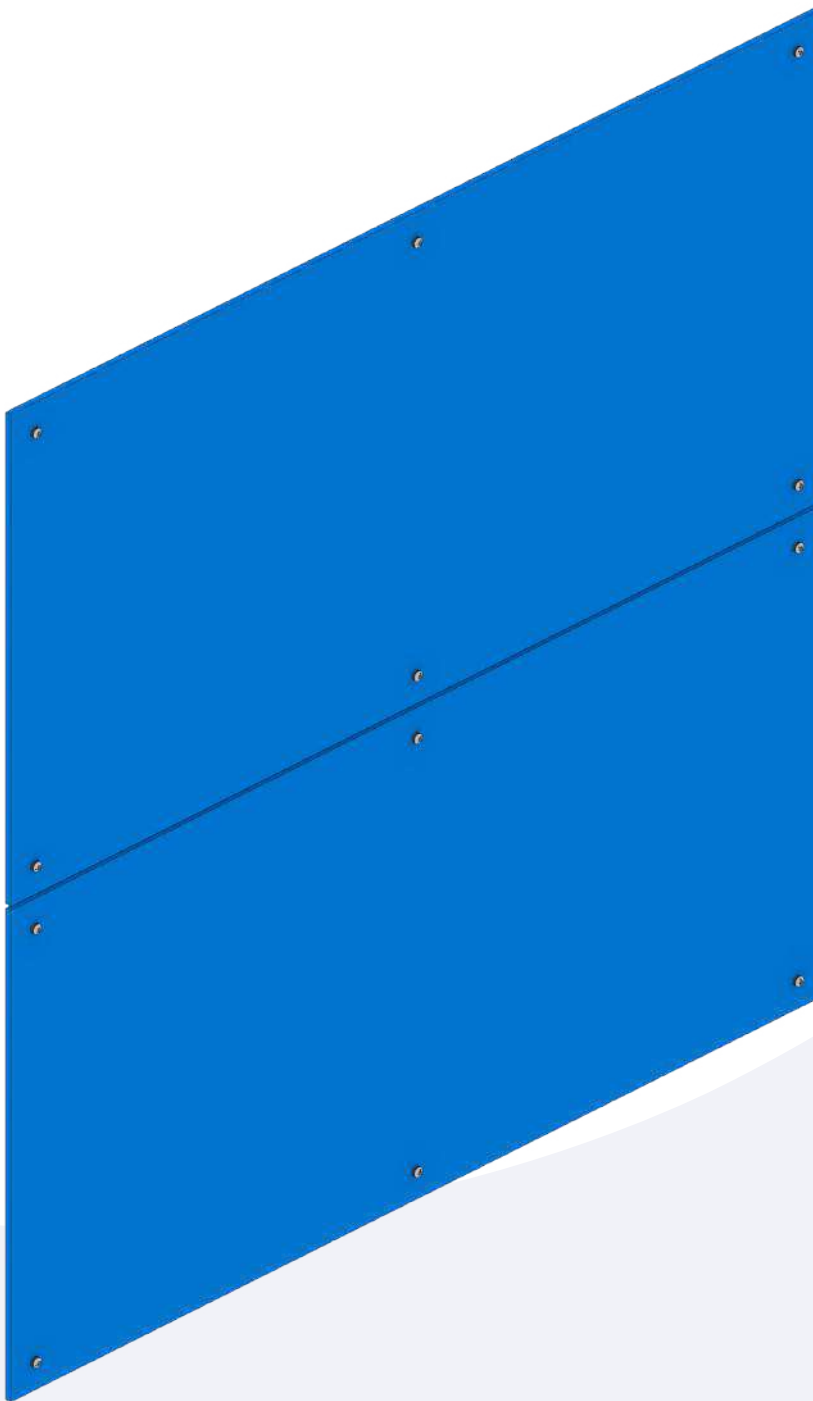


FASTENING METHOD

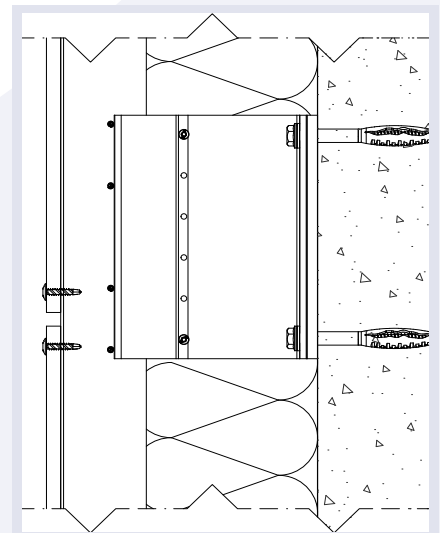
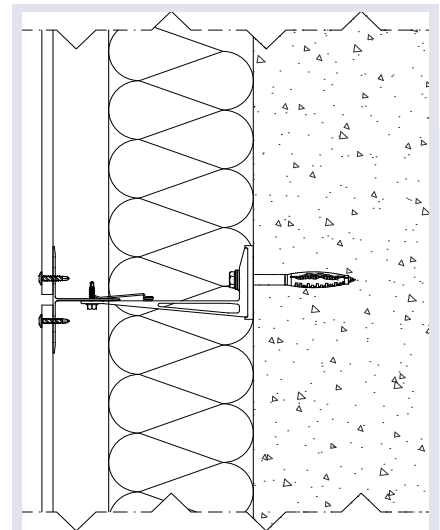
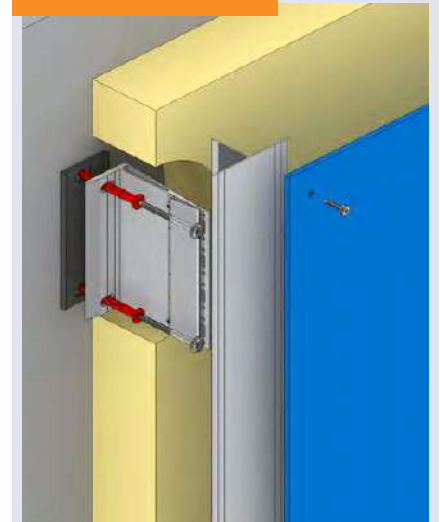
B 002

Visible fastening method. This involves mounting the cladding with screws to the structure behind. The screws are powder-coated in the colour of the facade plate.

Suitable for: e.g. HPL, ACP, wood, steel, fibre cement.



APPLICATION



0707

DRILL SCREW

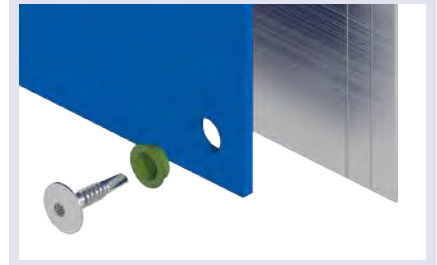
Drill screw for mounting facade cladding to the underlying structure. The head of the screw can be powder-coated in the colour of the cladding. Available with or without washer.



DIAMETER (MM)	LENGTH (MM)	HEAD Ø (MM)	PANEL THICKNESS (MM)	MATERIAL
5,5	28	12	4 - 8 on steel profiles	BI
5,5	25	16	4 - 8 on aluminium profiles	SB

Material: Stainless steel A2(BI) with steel drill tip
 Stainless steel A4(SB)
 Surface: powder-coated

APPLICATION



0521

CENTRE AND DISTANCE TUBES

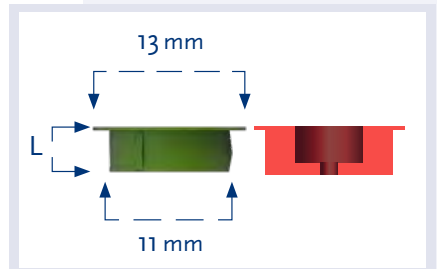
The Slide Tube (green) ensures that the plate / construction has room to expand.
 The Fix Tube (red) serves to fix the plate and keep it in place.



	ID (MM)	OD (MM)	L (MM)
Green - Slide	11	13	4.0
Green - Slide	11	13	6.0
Green - Slide	11	13	8.0
Red - Fix	11	13	4.0
Red - Fix	11	13	6.0
Red - Fix	11	13	8.0

Material: EPDM/Plastic
 Surface: Smooth

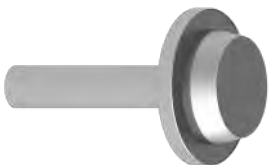
APPLICATION



0801

B002 CUTTING TOOL

This tool cuts the protective film from the cladding panels before fixing. After mounting the façade, the protective film can be removed without it sticking to the fixings.



APPLICATION



0483

TRUSSHEAD

Low head wood screw with a head diameter of 15mm and double thread. With any sealing washer if required.



DIAMETER (MM)	LENGTH (MM)	HEADØ (MM)	PANEL THICKNESS (MM)
5,5	38	15	4 - 8 on wooden frames

Material: Stainless steel A4 (SB)
Surface: Powder-coated

APPLICATION



0810

GEVELPLAAT SCHROEF

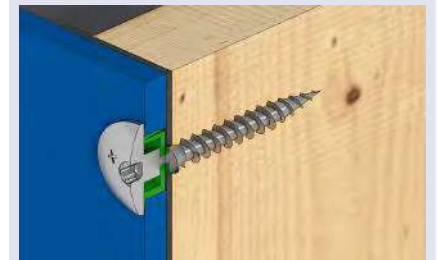
Facade sheet screw, for mounting on wood with 16mm head, to be used with 0521 tubes.



DIAMETER (MM)	LENGTH (MM)	HEADØ (MM)	PANEL THICKNESS (MM)
5,5	30	16	4 - 8 on wooden frames

Material: Stainless steel A4 (SB)
Surface: Powder-coating

APPLICATION



0824

GEVELPLAAT SCHROEF

Facade sheet screw, for mounting on wood with 16mm head, to be used with 0521 tubes.



DIAMETER (MM)	LENGTH (MM)	HEADØ (MM)	PANEL THICKNESS (MM)
5,5	50	16	4 - 8 on wooden and aluminium frames

Material: Stainless steel A2 (SA)
Surface: Powder-coating

APPLICATION

