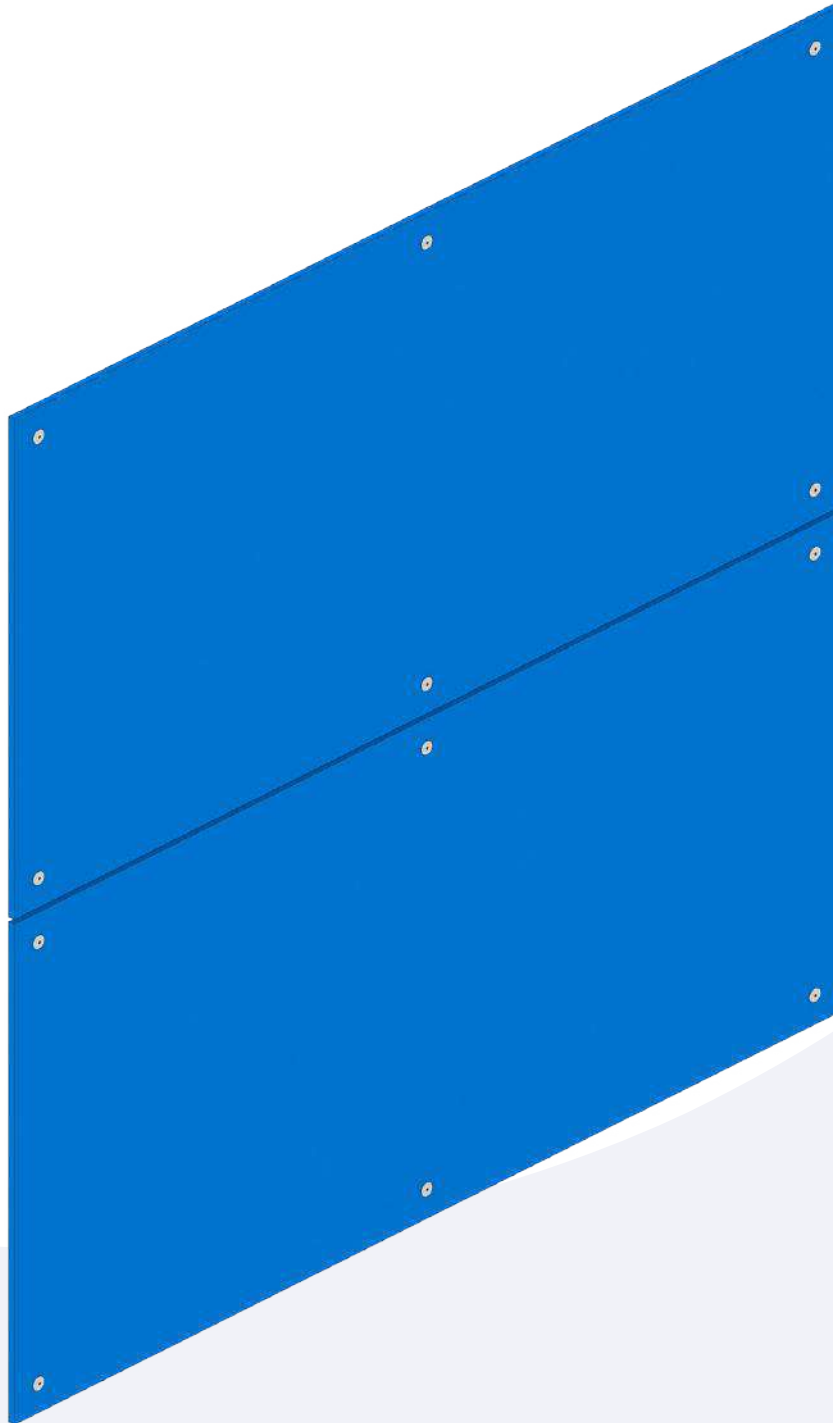


FASTENING METHOD

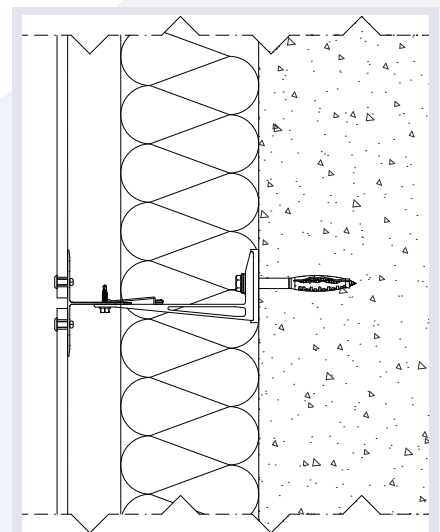
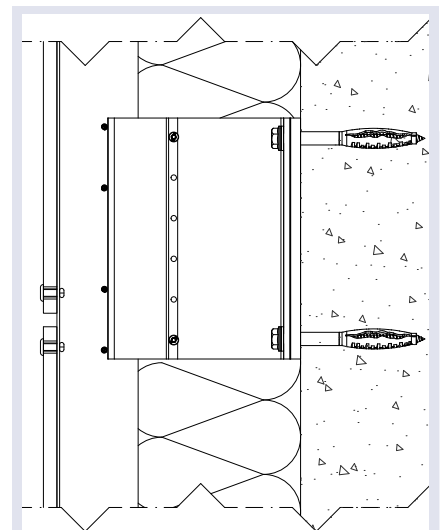
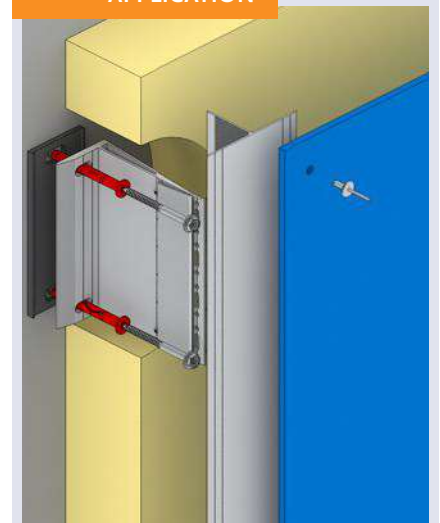
B 001

Visible fastening method where the cladding is mounted with blind rivets. The heads are powder-coated in the colour of the cladding, making the fastening invisible.

Suitable for: e.g. on HPL, ACP, wood, steel, fibre cement.



APPLICATION



0106



COLOUR-RIVET ®

Blind rivet for mounting cladding to underlying structures. The head can be powder-coated in the colour of the cladding for inconspicuous fixing.

4.0 x L Head diameter: 15 mm.
5.0 x L Head diameter: 11 -14 - 16 mm.

Material: Alu / RVS A2
RVS A2 / RVS A2
Surface: Powder-coated head



0521



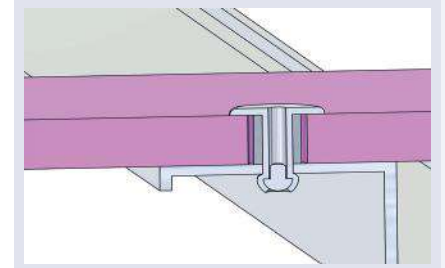
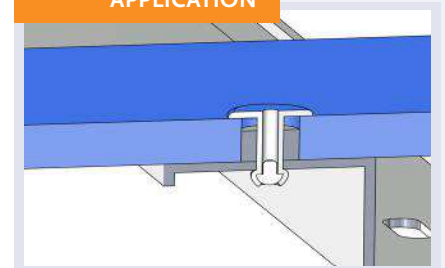
CENTRE AND DISTANCE TUBES

Centre & distance tubes used in combination with 0106

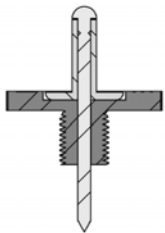
ID (MM)	OD (MM)	L (MM)
4.1	9.5	6.0
5.1	8.0	10.25
5.1	8.0	11.1
5.1	9.5	6.0
6.5	7.5	20.0
8.2	11.0	10.0

Material: Stainless steel A2
Surface: Plain

APPLICATION

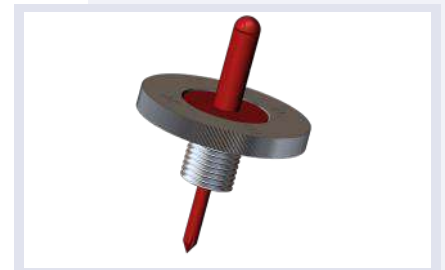


0136



NOSEPIECE

Blind rivet nosepiece for tension-free installation of blind rivet type 0106.



0516



CENTRING DRILL

Pilot drill set, to create centred installation holes in the sub-structure.

- Blind rivet 4.0
- Blind rivet 5.0
- Panel hole 8.5 mm
- Panel hole 10.0 mm
- Panel hole 12.5 mm

