

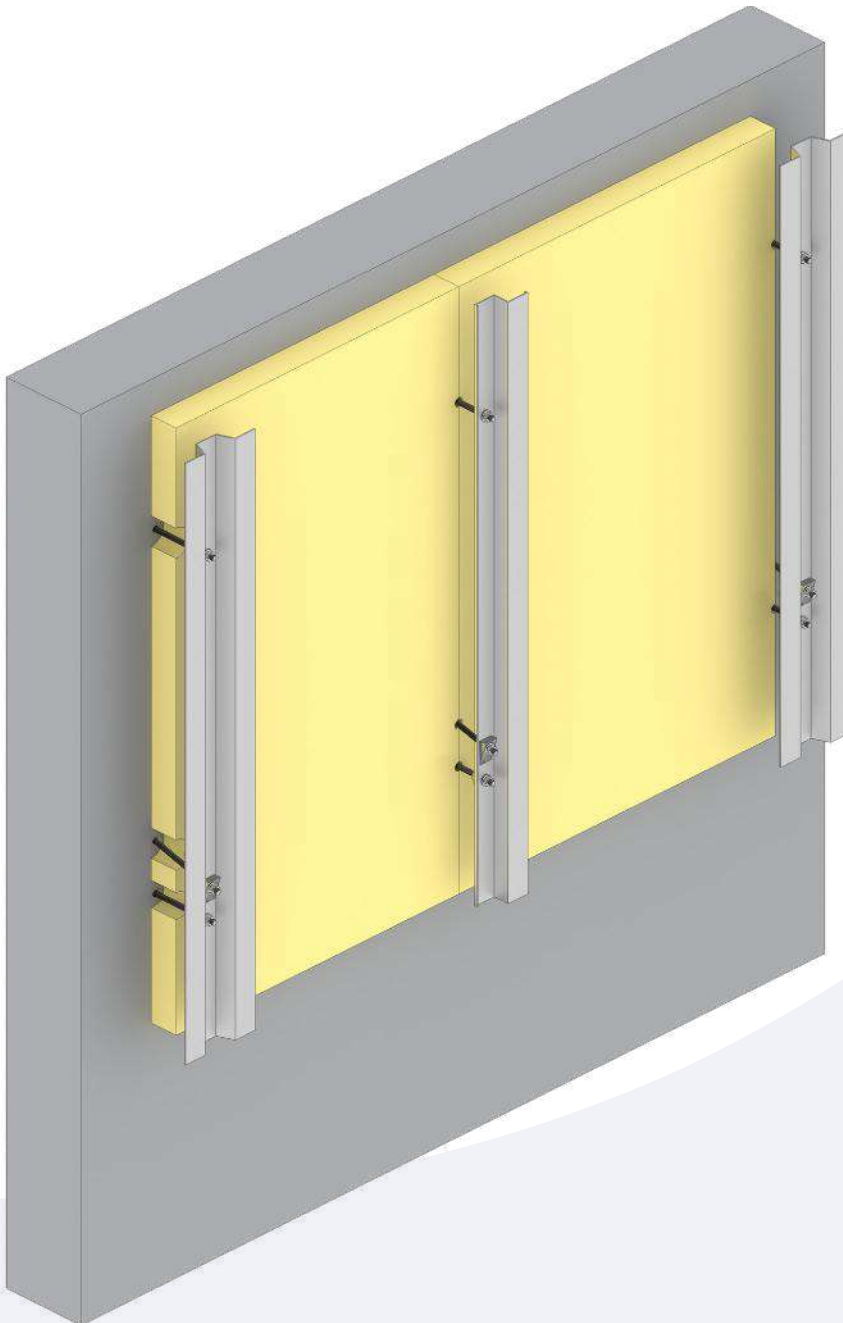
CONSTRUCTION PRINCIPLE

C 046

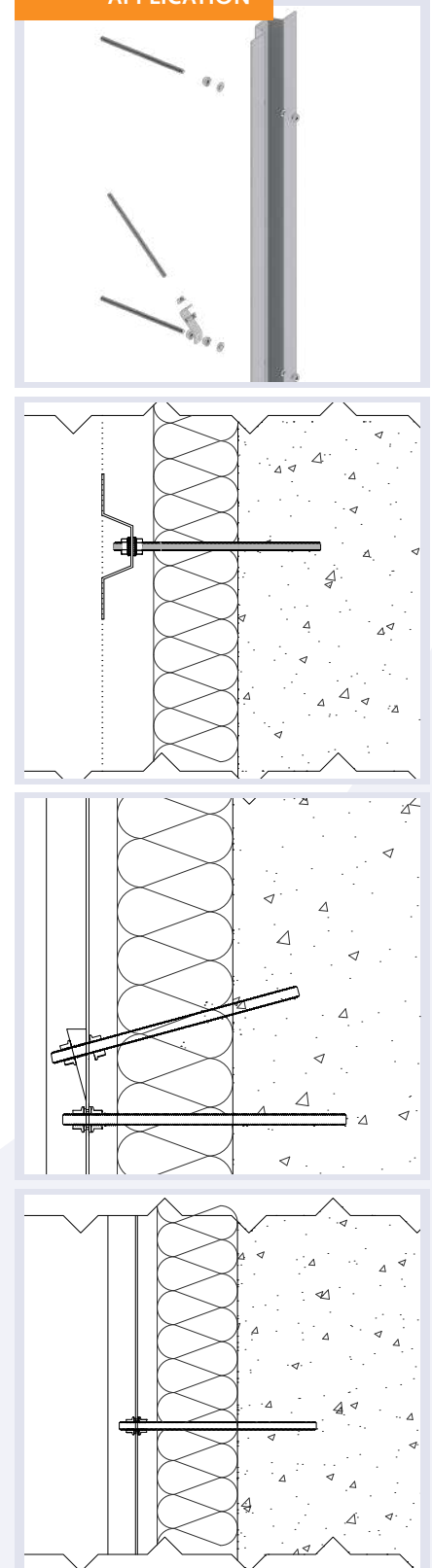
Construction principle with stainless steel anchor rods and brace with chemical injection mortar.

Features:

- Push-through installation.
- Suitable for installation on multiple main support structures.
- Reduction of thermal bridges due to small surface and stainless steel anchors
- Axial load to the main structure is centric.



APPLICATION



0571

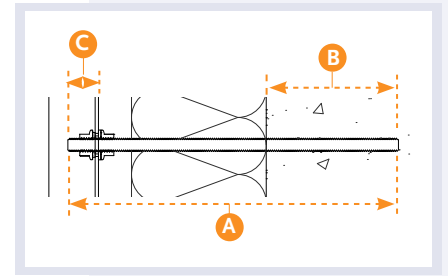


ANCHOR ROD

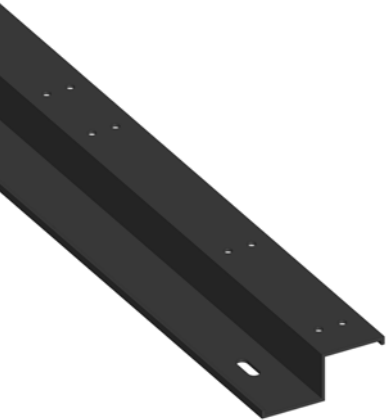
Anchor rods, with pre-assembled nut.

M	A (MM)	B (MM)	C (MM)
8	170	80	15
8	200	80	15
8	230	80	15
8	260	80	15
8	290	80	15
8	320	80	15
8	350	80	15
8	380	80	15
8	410	80	15

Material: Stainless A2 (304)
Surface: Plain



0190

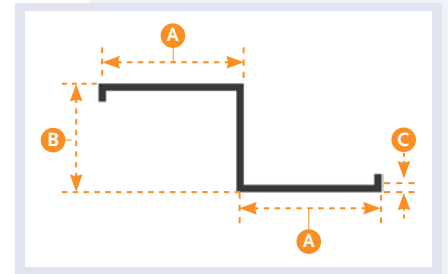


Z-PROFILE

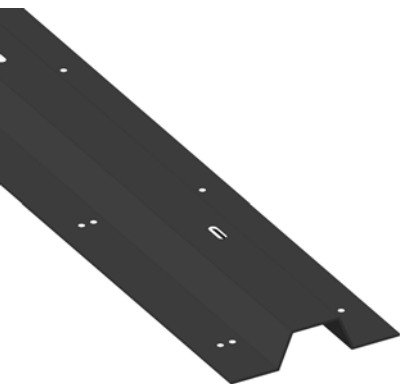
Aluminium Z profiles.

A (MM)	B (MM)	C (MM)	L (MM)
40	30	2.0	6,000

Material: EN AW 6063 T66
Surface: Plain
Anodised, grey / black



0191

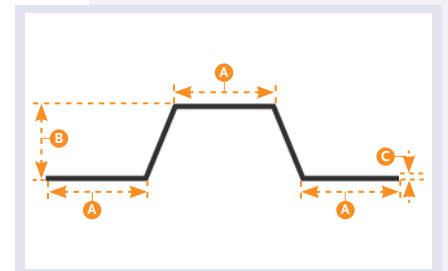


OMEGA PROFILE

Aluminium omega profiles.

A (MM)	B (MM)	C (MM)	L (MM)
25	15	2.0	6,000
25	20	2.0	6,000
40	30	2.0	6,000

Material: EN AW 6063 T66
Surface: Plain
Anodised, grey / black



0439



MKT VMU

Chemical injection mortar, for attaching 0575 and 0571.

Material: Chemical

0428



MKT VM-SH

Perfo sleeve VM-SH (plastic), for attaching 0575 and 0571 in hollow stone. M8.

Material: Plastic.

0577



CONTACT BREAKER WASHER

Seals, to prevent contact between anchor rods and profile

Material: Nylon.
Surface: Plain

0576



CONTACT BREAKER WASHER

Seals, to prevent contact between anchor rods and profile

Material: Nylon.
Surface: Plain

0515



NUT

Nut M8 with serrations, for anchor rod 0571

Material: Stainless steel A4 (316)
Surface: Plain

0679



WEDGE

Installation plate for the 0486; 15 degree angle with countersunk hole.

Material: Nylon.

